

Original Article

Snapshot Study of the Family Anaplasmataceae, *Anaplasma* spp., and *Ehrlichia* spp. Prevalence in Ticks of Sheep and Cattle in Jiroft City, Iran

Fahime Dehnoaliyan¹, Sajede Akbarabadi¹, *Parvin Mohseni¹, Elham Mohammadi¹, Saeidreza Nourollahifard¹, Marziyeh Pourfatahi¹, Amirhossein Khalili², Maziar Jajarmi¹

¹Department of Pathobiology, Faculty of Veterinary Medicine, Shahid Bahonar University of Kerman, Kerman, Iran

²Faculty of Medicine, Shahid Beheshti University of Medical Sciences, Tehran, Iran

*Corresponding author: Dr Parvin Mohseni, E-mail: parvin.mohseni.sisakht@gmail.com

(Received 16 Jan 2024; accepted 22 Jun 2024)

Abstract

Background: *Anaplasma* spp. and *Ehrlichia* spp. are amongst the most important tick-transmitted bacteria that can cause zoonotic disease in various hosts including ruminants and humans.

Methods: In this study, 16srRNA, *EE*, and *dsb* sequences were respectively used to screen Anaplasmataceae family, *Anaplasma* spp., and *Ehrlichia* spp. in tick samples (n= 100) collected from 100 domestic ruminants including 50 sheep and 50 cattle in Jiroft City, southeast of Iran, between June and August 2021.

Results: two genera were predominant among the ticks including *Hyalomma* spp. (64%; 43% from sheep and 21% from cattle) and *Rhipicephalus* spp. (36%; 22% from cattle and 14% from sheep); all ticks were adult and 73% of them were male. DNA of Anaplasmataceae was detected in 17% (17/100) of the ticks collected from cattle (18%; 9/50) and sheep (16%; 8/50). *Anaplasma* spp. was not found in the samples, but two ticks were positive for *Ehrlichia* spp.; all were positive for *Ehrlichia* spp. belonged to the cattle (4%; 2/50).

Conclusion: This study shows that Anaplasmataceae strains are circulating via ticks among domestic ruminants in the study area, emphasizing the need for effective tick control strategies by livestock farmers, health, and veterinary authorities. Surveillance, molecular characterization and further sequencing-based studies are crucial for informed control and prevention efforts.

Keywords: Ruminants; Ehrlichiosis; Anaplasmosis; Molecular detection; Tick-borne disease

Introduction

Ehrlichiosis and anaplasmosis are significant tick-borne zoonotic diseases caused by *Ehrlichia* spp. and *Anaplasma* spp., which are obligate intracellular bacteria from the family Anaplasmataceae; these are known as a non-contagious bacterial disease. The two pathogens are primarily transmitted by ticks such as *Ixodes* spp., *Hyalomma* spp., and *Rhipicephalus* spp. (1). Transmission occurs through transstadial routes but not transovarial routes; thus, each generation of ticks is infected by feeding on the reservoirs. Anaplasmosis and ehrlichiosis may be mechanically transmitted through the bite of flies or blood-contaminated equipment

and there are reports of placental transmission from an infected mother to her offspring (2).

The symptoms of ehrlichiosis and anaplasmosis vary based on the bacterial species, the susceptibility of the infected vertebrate hosts, the prevalence of tick vectors, and co-infections (3). Clinical signs in humans are non-specific and include decreased appetite, fever, swollen lymph nodes, depression, weight loss, vomiting, and diarrhea (3). Animals that contract the infection may either recover independently, becoming asymptomatic reservoirs of infection, or develop a chronic illness with signs including loss of appetite, weight loss, pro-

longed fever, weakness, and bleeding disorders in the animals leading to significant economic losses in developing countries due to its widespread occurrence (4).

Ehrlichiosis and anaplasmosis are endemic in tropical and subtropical regions, affecting various animals (5, 6); therefore, it is recommended to screen for Anaplasmataceae even in healthy hosts. Due to the low levels of bacteria in the blood, standard microscopy techniques struggle to detect infections in carriers. So, molecular assays including polymerase chain reaction (PCR) and sequencing can be considered as more precise techniques for identifying the infections. PCR can also detect pathogen DNA in the acute phase of infection when antibodies are not yet present (7).

Some important species of *Ehrlichia* spp. and *Anaplasma* spp. include *E. canis*, *E. ruminantium*, *E. chaffeensis*, *E. wingii*, *A. marginale*, *A. ovis*, *A. centrale*, *A. phagocytophilum*, and *A. bovis*. These strains affect domestic and wild ruminants, horses, dogs, and humans (farm workers, pet owners, hunters, and people living in the village). Best of our knowledge in Iran, there is little information on the prevalence of *Ehrlichia* spp. and *Anaplasma* spp. in sheep and cattle, in Iran. This research aimed to investigate the presence of *Ehrlichia* spp. and *Anaplasma* spp. in ticks collected from ruminants in Jiroft city, south-east Iran.

Materials and Methods

Sample collection

There were three main criteria for selecting ruminants for the study: (i) The large population of cattle and sheep in Jiroft made it an ideal location for the research. (ii) The animals selected appeared healthy, highlighting the importance of asymptomatic reservoirs in the distribution of pathogens. (iii) The presence of ticks on the ruminants was the main factor in selecting animals for sampling. A total of one hundred ticks were collected from domesticated ruminants including cattle (n=

50) and sheep (n= 50), from five herds in the Jiroft region (city and suburbs), between June and August 2021 (Fig. 1). Tick samples were stored in microtubes containing 70% ethanol and transferred to the veterinary microbiology and parasitology laboratory at Shahid Bahonar University of Kerman.

The sample size was determined by the below formula:

$$\text{Sample size} = \frac{Z_{1-\frac{\alpha}{2}}^2 p(1-p)}{d^2} = \frac{3.84 \times 0.3 \times 0.7}{0.0081} = 99.55$$

95% confidence level (based on 0.05 error level or α); $Z = 1.96$; $Z^2 = 3.84$

Expected proportion based on previous studies (6,8–10) (p)= 30% (0.3); $1-p = 0.7$

Error determined by the researchers of this study (d)= 9% (0.09); $d^2 = 0.0081$

DNA extraction from ticks

Tick samples were washed three times with a sterile 0.9% sodium chloride solution to remove ethanol. They were then placed on sterile paper to dry for 10 minutes. The ticks were crushed with a sterile scalpel and transferred to a sterile 1.5 ml microtube, where pre-lysis buffer (100 μ l) and proteinase K (30 μ l) were added. DNA was extracted using a commercial tissue DNA extraction kit (Sinapur, Iran) according to the manufacturer's instructions. The amount of DNA was measured with a spectrophotometer (NanoDrop, BioTek Epoch, US) at a wavelength of 260/280 nm. The extracted DNA samples were stored at -20 °C.

Molecular screening of Anaplasmataceae, *Ehrlichia* spp. and *Anaplasma* spp.

The DNA templates were evaluated for the presence of Anaplasmataceae, *Anaplasma* spp., and *Ehrlichia* spp. using the primers and procedures (Table 1) outlined by Zaid et al. (11), Han et al. (12), and Soares et al. (13) to identify the 16S rRNA (for Anaplasmataceae), 16S rRNA gene fragment in *Anaplasma* spp.) and dsb (disulfide bond formation protein in *Ehrlichia* spp.) genes, respectively.

Polymerase chain reaction (PCR) was performed in a volume of 20 μL [2.5 μL of DNA extract, 0.5 μL from each primer (for 0.5 μM final concentration), 10 μL of 2X ready-to-use Master Mix (Ampliqon, Odense, Denmark) and distilled RNase-DNase free water up to the reaction volume]. The cycling conditions were: 96 $^{\circ}\text{C}$ for 3 min, followed by 35 cycles of 95 $^{\circ}\text{C}$ for 30 s, 55 $^{\circ}\text{C}$ for 30 s, and 72 $^{\circ}\text{C}$ for 40 s. A final step was performed at 72 $^{\circ}\text{C}$ for 10 min. In this study, extracted DNA from positive clinical samples for *Ehrlichia* spp. and *Anaplasma* spp., provided by Dr Mohammad Khalili (Shahid Bahonar University of Kerman), were used as positive controls. Also, distilled water was used as the negative control. PCR products were visualized by electrophoresis (100 V, 45 min on 1.3% agarose gel) and UV trans-illumination.

Results

In the present study, two tick genera were predominant among the collected ticks ($n=100$) including *Hyalomma* spp. (64%; 43% from sheep and 21% from cattle) and *Rhip-*

icephalus spp. (36%; 22% from cattle and 14% from sheep); all ticks were adult and 73% of them were male. Among the 100 tick samples, 17 (17%; 95% CI: 10.2–25.8%) were positive for the family Anaplasmataceae (Fig. 2). These ticks were collected from cattle (9/50, 18%; 95% CI: 8.5–31.4%) and sheep (8/50, 16%; 95% CI: 7.1–29.11%). Two of the 17 samples (11.8%; 95% CI: 1.4–36.4%) were positive for *Ehrlichia* spp. DNA, but none were positive for *Anaplasma* spp. DNA (Fig. 2). The two *Ehrlichia*-positive ticks were collected from cattle (2/50; 4%, 95% CI: 0.4–13.7%).

The frequency of negative samples for Anaplasmataceae was significantly higher than the positives ($P < 0.05$). Among the Anaplasmataceae-positive samples, the prevalence of negatives for *Ehrlichia* spp. and *Anaplasma* spp. was significantly higher than the positives for *Ehrlichia* spp. ($P < 0.05$). The prevalence of the family Anaplasmataceae and *Ehrlichia* spp. in sheep was not significantly different from the prevalence in cattle ($P > 0.05$). There was no significant association between tick species and the studied bacterial agent.

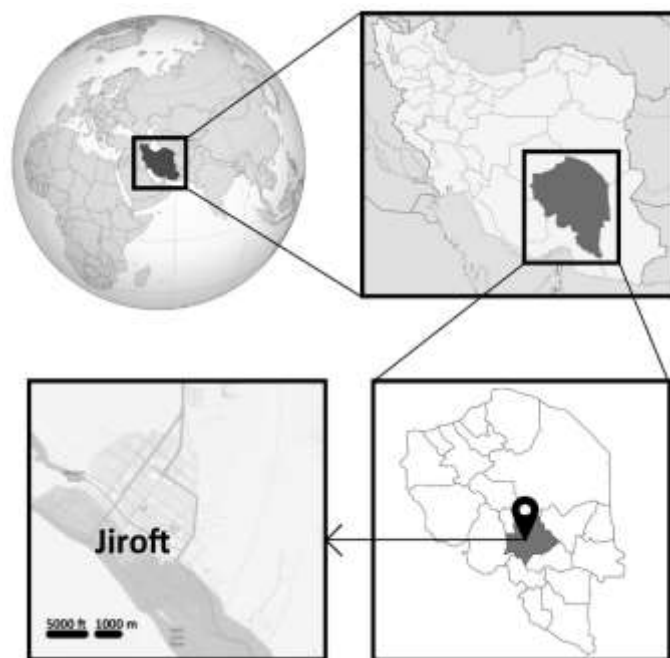


Fig. 1. Location of tick sampling between June and August 2021 in Jiroft City

Table 1. Sequence of the specific primers used for detection of Anaplasmataceae, *Ehrlichia* spp., and *Anaplasma* spp. in ticks collected in Jiroft City, June- August 2021

Gene name	Target	Primer name (Ref.)	Primer sequence (5'-3')	PCR product size (bp)
16s rRNA	Anaplasmataceae	EHR16SR EHR16SD (11)	F- GGTACCYACAGAAGAAGTCC R- TAGCACTCATCGTTTACAGC	345
16s rRNA	<i>Anaplasma</i> spp.	EE1 EE2 (12)	F-TCCTGGCTCAGAACGAACGCTGGCGGC R-AGTCACTGACCCAACCTTAAATGGCTG	1400
<i>dsb</i> (disulfide oxidoreductase)	<i>Ehrlichia</i> spp.	dsb-330 dsb-720 (13) dsb-380 dsb-720 (13)	F-GATGATGTTTGAAGATATSAAACAAAT R-CTATTTTACTTCTTAAAGTTGATAWATC F-ATTTTTAGRGATTTTCCAATACTTGG R-CTATTTTACTTCTTAAAGTTGATAWATC	401 349

F: forward; R: reverse

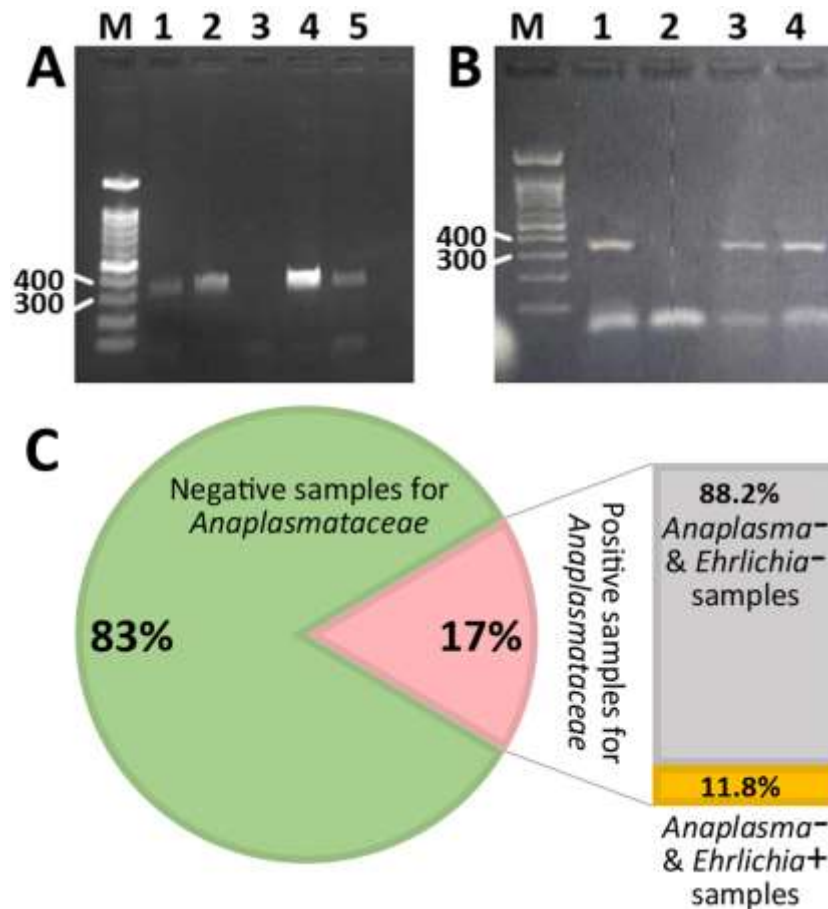


Fig. 2. Detection of Anaplasmataceae, *Ehrlichia* spp., and *Anaplasma* spp. in ticks collected in Jiroft City between June and August 2021. **A:** agarose gel electrophoresis image of the 16s RNA PCR products (345 bp), M, Marker [100 bp ladder (Cinna Clone; Iran)]; 1, 2, and 5, positive samples; 3, negative control (distilled water); 4, positive control (extracted DNA of positive clinical samples for Anaplasmataceae provided by Shahid Bahonar University of Kerman). **B:** *dsb* gene PCR products (349 or 401 bp), M, Marker (100 bp ladder); 1, positive control (extracted DNA of positive clinical samples for *Ehrlichia* spp. provided by Shahid Bahonar University of Kerman); 2, negative control (distilled water); 3 and 4, positive samples. **C:** Prevalence rate of the family Anaplasmataceae, *Anaplasma* spp., and *Ehrlichia* spp. in the ticks studied

Discussion

In the present study, *Hyalomma* spp. accounted for 64% of the ticks (43% from sheep and 21% from cattle), while *Rhipicephalus* spp. constituted 36% (22% from cattle and 14% from sheep); there was no significant association between tick species and the studied bacterial agents. These results differ significantly from the findings in Thailand (14), where *Rhipicephalus* spp. dominated the tick population (93.18%) in cattle, with *Haemaphysalis* spp. making up the remaining 6.82%. Research in Iraq (15) reported the predominance of both *Rhipicephalus* spp. and *Hyalomma* spp. in ticks from sheep. In France (16) *Rhipicephalus* spp. and *Hyalomma* spp. were detected from cattle with the frequencies 84.5% and 15.5%, respectively. Furthermore, in Iran (9) a different distribution was found for *Rhipicephalus* spp. (41%), *Hyalomma* spp. (29%), and *Dermacentor* spp. (30%) on various ruminants. These differences suggest that environmental factors, host availability, and regional ecology play crucial roles in shaping tick species distribution across various geographic regions.

In this research, the frequency of Anaplasmataceae among the ticks collected from cattle and sheep was on average 17%. Of these, 52.9% (9/17 ticks) were from cattle and 47.1% (8/17 ticks) from sheep. None of the ticks were positive for *Anaplasma* spp., but two were positive for *Ehrlichia* spp.; all positive ticks for *Ehrlichia* belonged to cattle. Ranjbar et al. (17) found that approximately one-fourth of ovine ticks in Kerman province were positive for *Anaplasma* spp. which is higher than the present study. Absence of *Anaplasma* spp. in the samples but the presence of *Ehrlichia* spp. underscores the complexity and diversity of tick-borne pathogens in different ecological settings (18).

Other studies in Iran revealed varying prevalence rates for these bacteria; Mohammadian et al. (19) reported a higher prevalence of *Anaplasma* spp. in cattle compared to sheep. In a

study conducted by Choubdar et al. (5), *Anaplasma* spp. (89.9%) and *Ehrlichia* spp. (9.1%) were found in *Hyalomma* spp. on the Iran-Pakistan border. Yousefi et al. (8) detected *A. ovis* in over one-fifth of sheep and goats in Iran, while Jafar Bekloo et al. (9) identified the DNA of *Anaplasma* and/or *Ehrlichia* spp. in approximately 5% of ticks isolated from ruminants. Noaman and Bastani (10) reported a low frequency of *Anaplasma* spp. in sheep and cattle. Hosseini-Vasoukolaei et al. (6) detected *A. ovis* from 8% of tick samples, 2.5% of human blood, and 5.1% of sheep blood samples.

Some studies in Asian countries show similar prevalence rates to the present findings; Galay et al. (20) found the frequency of *Anaplasmataceae* and *Ehrlichia* spp. to be approximately 16% and 2%, respectively which aligns with the results of this study. In Iraq, the prevalence of *Anaplasma* spp. is similar to present findings (15). Thinnabut et al. (14) conducted a study in northeastern Thailand, detecting both *Anaplasma* spp. (21.7%) and *Ehrlichia* spp. (7.2%) in beef cattle ticks; they reported a significant genetic diversity of tick populations, which could contribute to the differences in prevalence rates observed across different studies. Yan et al. (21) detected *Anaplasma* spp. (23%) closely related to *A. phagocytophilum* in small ruminants from China, showing significant regional variations in pathogen prevalence and species diversity. Their results support the region-specific distribution pattern of pathogens, highlighting the need for localized studies to understand the epidemiology of tick-borne diseases.

However, studies in African and South American countries generally show higher prevalence rates (22–26), while European studies report lower prevalence rates (16, 27). Abdel-Shafy et al. (7) in Egypt identified *Anaplasmataceae* in 25% of cattle and 26.3% of sheep, (Table 2). Matos et al. (28) in Mozam-

bique, found *A. marginale* and *E. ruminantium* in beef cattle with varying prevalence rates (9–77%) and reported a higher prevalence of *Anaplasma* spp. (76.5%) compared to the present study. Similarly, Silva et al. (29) in Brazil, detected *Anaplasma* spp. in sheep (2.9%) and goats (17.4%) indicating a widespread presence of these pathogens in various types of livestock across different continents., which could be attributed to differences in environmental factors, tick species, and host immunity.

Differences in prevalence rates across studies may be due to variations in tick control strategies, climatic conditions affecting tick growth, farm management programs, and animal husbandry practices. Anaplasmosis is endemic in many regions of Iran, with infection rates increasing in spring and summer (30). Additionally, different detection protocols can affect results; for instance, higher prevalence rates are often found in blood samples compared to tick samples possibly due to the difficulty in DNA extraction from ticks. The family Anaplasmataceae includes other genera such as *Neorickettsia* and *Wolbachia* which may explain why some Anaplasmataceae-positive samples were negative for *Anaplasma* and *Ehrlichia* spp.

Conclusion

The family Anaplasmataceae is potentially circulating among ruminants via ticks in the Jiroft region. Therefore, livestock farmers, health, and veterinary authorities must adopt appropriate strategies for tick control. The findings contribute to evidence on the distribution of Anaplasmataceae in different regions. The observed variations in prevalence rates and species diversity underscore the importance of continuous surveillance and molecular characterization of these pathogens to inform effective control and prevention strategies. So, further molecular and sequencing-based studies are recommended in Iran to investigate the Anaplasmataceae pathogens in various hosts.

Acknowledgements

The authors would like to express their gratitude to the employees of the microbiology laboratory, the faculty of veterinary medicine, Shahid Bahonar University of Kerman for their kind participation in this research.

Ethical considerations

Ethical approval does not apply to this study.

Conflict of interest statement

The authors declare that there is no conflict of interest.

References

1. Ismail N, McBride JW (2017) Tick-borne emerging infections: ehrlichiosis and anaplasmosis. *Clin Lab Med.* 37(2): 317–340.
2. Karlsen A, Vojtek B, Mojžišová J, Prokeš M, Drážovská M (2020) Anaplasmosis in animals. *Folia Veterinaria.* 64(4): 17–26.
3. Mubashir M, Tariq M, Khan MS, Safdar M, Özaslan M, Imran M, Ullah Q, Siddique F, Junejo Y (2022) Review on anaplasmosis in different ruminants. *Zeugma Biol Sci.* 3(2): 32–45.
4. Silaghi C, Santos AS, Gomes J, Christova I, Matei IA, Walder G, Domingos A, Bell-Sakyi L, Sprong H, Von Loewenich FD, Oteo JA (2017) Guidelines for the direct detection of *Anaplasma* spp. in diagnosis and epidemiological studies. *Vector-Borne Zoonotic Dis.* 17(1): 12–22.
5. Choubdar N, Karimian F, Koosha M, Nejati J, Oshaghi MA (2021) *Hyalomma* spp. ticks and associated *Anaplasma* spp. and *Ehrlichia* spp. on the Iran-Pakistan border. *Parasit Vectors.* 14: 1–8.

6. Hosseini-Vasoukolaei N, Oshaghi MA, Shayan P, Vatandoost H, Babamahmoudi F, Yaghoobi-Ershadi MR, Telmadarraiy Z, Mohtarami F (2014) *Anaplasma* infection in ticks, livestock and human in Ghaemshahr, Mazandaran Province, Iran. *J Arthropod Borne Dis*. 8(2): 204.
7. Abdel-Shafy S, Abdullah HHAM, Elbayoumy MK, Elsayy BSM, Hassan MR, Mahmoud MS, Hegazi AG, Abdel-Rahman EH (2022) Molecular epidemiological investigation of piroplasms and Anaplasmataceae bacteria in Egyptian domestic animals and associated ticks. *Pathogens*. 11(10): 1194.
8. Yousefi A, Rahbari S, Shayan P, Sadeghdehkordi Z, Bahonar A (2017) Molecular detection of *Anaplasma marginale* and *Anaplasma ovis* in sheep and goat in west highland pasture of Iran. *Asian Pac J Trop Biomed*. 7(5): 455–459.
9. Jafar Bekloo A, Ramzgouyan MR, Shirian S, Faghihi F, Bakhshi H, Naseri F, Sedaghat M, Telmadarraiy Z (2018) Molecular characterization and phylogenetic analysis of *Anaplasma* spp. and *Ehrlichia* spp. isolated from various ticks in southeastern and northwestern regions of Iran. *Vector-Borne Zoonotic Dis*. 18(5): 252–257.
10. Noaman V, Bastani D (2016) Molecular study on infection rates of *Anaplasma ovis* and *Anaplasma marginale* in sheep and cattle in West-Azerbaijan province, Iran. *Vet Res forum*. 7(2): 163–167.
11. Zaid T, Ereqat S, Nasereddin A, Al-Jawabreh A, Abdelkader A, Abdeen Z (2019) Molecular characterization of *Anaplasma* and *Ehrlichia* in ixodid ticks and reservoir hosts from Palestine: a pilot survey. *Vet Med Sci*. 5(2): 230–242.
12. Han R, Yang JF, Mukhtar MU, Chen Z, Niu QL, Lin YQ, Liu GY, Luo JX, Yin H, Liu ZJ (2019) Molecular detection of *Anaplasma* infections in ixodid ticks from the Qinghai-Tibet Plateau. *Infect Dis Poverty*. 8(01): 83–90.
13. Soares HS, Marcili A, Barbieri ARM, Minervino AHH, Malheiros AF, Gennari SM, Labruna MB (2017) Novel *Anaplasma* and *Ehrlichia* organisms infecting the wildlife of two regions of the Brazilian Amazon. *Acta Trop*. 174: 82–87.
14. Thinnabut K, Rodpai R, Sanpool O, Maleewong W, Tangkawanit U (2023) Genetic diversity of tick (Acari: Ixodidae) populations and molecular detection of *Anaplasma* and *Ehrlichia* infesting beef cattle from upper-northeastern Thailand. *Infect Genet Evol*. 107: 105394.
15. Hamzah KJ, Hasso SA (2019) Molecular prevalence of *Anaplasma phagocytophilum* in sheep from Iraq. *Open Vet J*. 9(3): 238–245.
16. Cicculli V, Masse S, Capai L, de Lamballerie X, Charrel R, Falchi A (2019) First detection of *Ehrlichia minasensis* in *Hyalomma marginatum* ticks collected from cattle in Corsica, France. *Vet Med Sci*. 5(2): 243–248.
17. Ranjbar R, Anjomruz M, Enayati AA, Khoobdel M, Rafinejad A, Rafinejad J (2020) *Anaplasma* infection in ticks in southeastern region of Iran. *J Arthropod Borne Dis*. 14(2): 126–133.
18. Lu M, Tian J, Wang W, Zhao H, Jiang H, Han J, Guo W, Li K (2022) High diversity of *Rickettsia* spp., *Anaplasma* spp., and *Ehrlichia* spp. in ticks from Yunnan Province, Southwest China. *Front Microbiol*. 13: 1008110.
19. Mohammadian B, Noaman V, Emami SJ (2021) Molecular survey on prevalence and risk factors of *Anaplasma* spp. infection in cattle and sheep in West of Iran. *Trop Anim Health Prod*. 53: 1–7.
20. Galay RL, Llaneta CR, Monreal MKFB, Armero III AL, Baluyut ABD, Regino CMF, Sandalo KA, Divina BP, Talactac MR, Tapawan LP, Mojares MC (2021) Molecular Prevalence of *Anaplasma marginale* and *Ehrlichia* in domestic large

- ruminants and *Rhipicephalus (Boophilus) microplus* ticks from Southern Luzon, Philippines. *Front Vet Sci.* 8: 746705.
21. Yan Y, Lu C, Gong P, Pei Z, Peng Y, Jian F, Wang R, Zhang L, Qi M, Ning C (2022) Molecular detection and phylogeny of *Anaplasma* spp. closely related to *Anaplasma phagocytophilum* in small ruminants from China. *Ticks Tick Borne Dis.* 13(5): 101992.
 22. Chiuya T, Villinger J, Masiga DK, Ondifudo DO, Murungi MK, Wambua L, Bastos AD, Fèvre EM, Falzon LC (2021) Molecular prevalence and risk factors associated with tick-borne pathogens in cattle in western Kenya. *BMC Vet Res.* 17(1): 1–17.
 23. Eisawi NM, El Hussein ARM, Hassan DA, Musa AB, Hussien MO, Enan KA, Bakheit MA (2020) A molecular prevalence survey on *Anaplasma* infection among domestic ruminants in Khartoum State, Sudan. *Trop Anim Health Prod.* 52: 1845–1852.
 24. Peter SG, Aboge GO, Kariuki HW, Kanduma EG, Gakuya DW, Maingi N, Mulei CM, Mainga AO (2020) Molecular prevalence of emerging *Anaplasma* and *Ehrlichia* pathogens in apparently healthy dairy cattle in peri-urban Nairobi, Kenya. *BMC Vet Res.* 16(1): 1–12.
 25. Abanda B, Paguem A, Abdoulmoumini M, Kingsley MT, Renz A, Eisenbarth A (2019) Molecular identification and prevalence of tick-borne pathogens in zebu and taurine cattle in North Cameroon. *Parasit Vectors.* 12: 1–13.
 26. Esemu SN, Ndip RN, Ndip LM (2018) Detection of *Ehrlichia ruminantium* infection in cattle in Cameroon. *BMC Res Notes.* 11(1): 1–5.
 27. Pesquera C, Portillo A, Palomar AM, Oteo JA (2015) Investigation of tick-borne bacteria (*Rickettsia* spp., *Anaplasma* spp., *Ehrlichia* spp. and *Borrelia* spp.) in ticks collected from Andean tapirs, cattle and vegetation from a protected area in Ecuador. *Parasit Vectors.* 8(1): 1–10.
 28. Matos CA, Nomboro CF, Gonçalves LR, Cala AC, Siteo CF, Vinte APR, Mondlane CM, André MR, do Carmo Carrilho M (2024) Molecular diagnosis and characterization of *Anaplasma marginale* and *Ehrlichia ruminantium* infecting beef cattle of Maputo Province, Mozambique. *BMC Vet Res.* 20(1): 1–12.
 29. Silva EMC, Marques ICL, de Mello VVC, do Amaral RB, Gonçalves LR, Braga MDSCO, Ribeiro LSDS, Machado RZ, André MR, Neta AVC (2024) Molecular and serological detection of *Anaplasma* spp. in small ruminants in an area of Cerrado Biome in northeastern Brazil. *Ticks Tick Borne Dis.* 15(1): 102254.
 30. Noaman V (2020) Epidemiological study on *Anaplasma phagocytophilum* in cattle: molecular prevalence and risk factors assessment in different ecological zones in Iran. *Prev Vet Med.* 183: 105118.